

# 2016 Needs Assessment Survey



a place of mind

THE UNIVERSITY OF BRITISH COLUMBIA

## Interprofessional Continuing Education



## Table of Contents

Overall Summary	3
Demographics Statistics	4
Geographic Results	6
Site Preferences	6
Topic Areas of Interest	7
Prize Winners	8

# 2016 Survey Analysis Summary

## UBC Interprofessional Continuing Education: 2016 IPCE Survey Analysis Summary

The department of Interprofessional Continuing Education (IPCE) at the University of British Columbia (UBC)'s mission is to provide advanced, up-to-date, interdisciplinary professional educational programming to health professionals, service providers, policy officials and the public on a variety of topics.

To achieve this goal, IPCE created a **Needs Assessment Survey** in 2016 (the first of its kind developed and delivered by IPCE) with the goal to better understand the continuing education needs of its audience. Ideally, the responses gathered in the survey would directly help IPCE plan future continuing education programming that aligns with their specific needs and interests.

There were around 1200 participants who filled out the survey and after a careful analysis, the key findings were such that:

1. 86% of respondents are from Canada and prefer conferences during week-days in their home city, with Vancouver as the highest preference site, followed by Victoria and Whistler.
2. The top topic areas of interest outlined in the survey were addictions, childhood development, collaborative care, FASD, interprofessional/interdisciplinary collaboration and communication and mental health and well-being.
3. Registration fees were the most significant factor indicated by respondents for selecting continuing education activities, followed by the quality of the speakers, and learning outcomes. A third of respondents indicated that their registration, travel and accommodation for Continuing Education Activities are self-funded, while one quarter indicated that some or all of their costs are covered by their employers.

The results of this survey above are expected to provide support to UBC IPCE in our program planning activities. Here is the implementation strategy directly resulting from the key findings above:

1. Currently, IPCE holds 2-4 day conferences, mostly in Vancouver, mostly during weekdays. IPCE will be looking into possibly hosting in Victoria (which has been done before) or Whistler as long as costs do not significantly increase by doing so.
2. IPCE organizes many conferences in the topic areas of interest outlined in #2. IPCE will continue to evaluate any cutting edge or new findings in those areas, and thoroughly review the findings in question #13 of the survey: *Please list three skills or concepts that you would benefit from learning or reviewing at future CE activities in order to improve your clinical care or practice*
3. IPCE has made a conscious effort to keep the registration prices as low as possible in past programming. IPCE will continue to be diligent in this regard. Also, with the finding that a third of respondents indicating that their registration, travel and accommodation are self-funded, ICPE will aim to provide more bursaries through sponsorships and other means of funding.

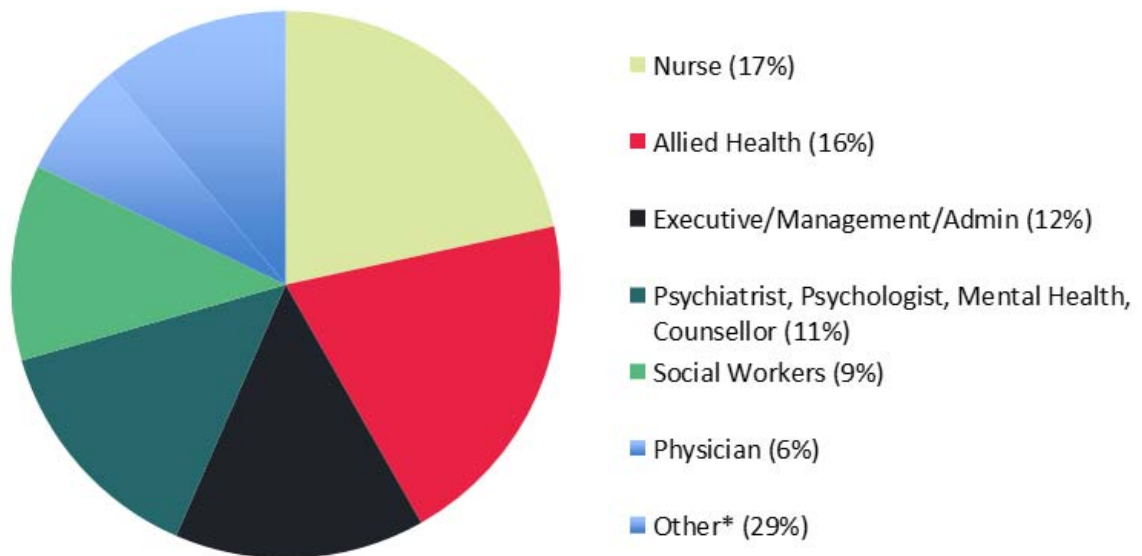
At the end of the survey, each individual was given an opportunity to provide their name and email address to be automatically entered into a draw for various prizes. The winners for each prize are listed on page 9.

UBC Interprofessional Continuing Education would like to thank each individual who took part in the survey and hope to see you at our future initiatives!

# DEMOGRAPHIC STATISTICS

*Below are the key findings for the demographics which were asked  
in the survey.*

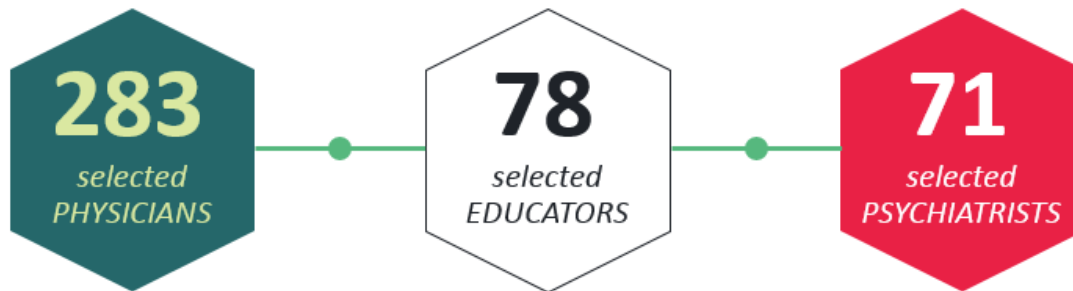
## PROFESSION BREAKDOWN



“Allied Health” includes but is not limited to: physiotherapists, occupational therapists, dietitians, mechanical engineers, seating specialists, pharmacists.

“Other” includes but is not limited to: professors, community representatives, attorneys, students.

## TOP THREE PROFESSIONS with whom respondents most frequently work/collaborate



# 53%

OF RESPONDENTS HAVE ATTENDED IPCE CONFERENCES IN THE PAST

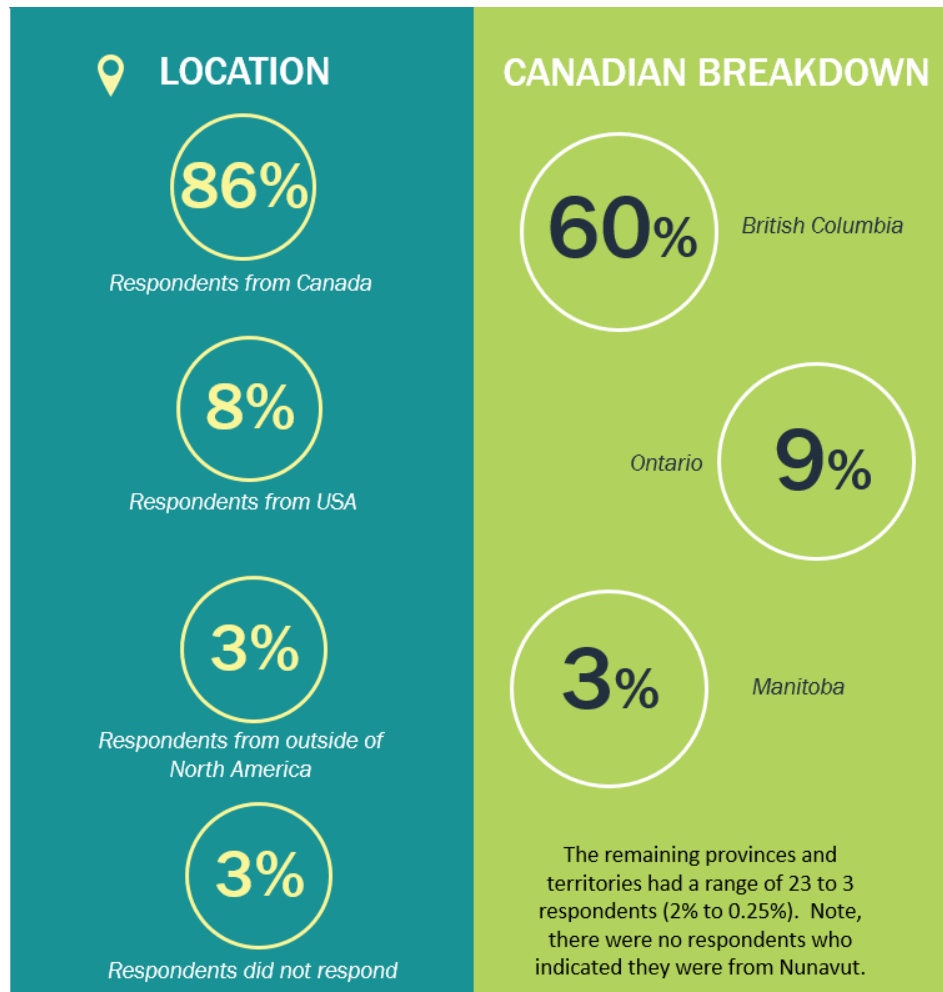
### DID YOU KNOW

Registration fees is indicated as a significant factor, with 61% selecting it among their first, second, and third factors in choosing a CE activity.

Preference is indicated for the quality of the speakers with 57% selecting it among their first, second, and third factors.

Learning outcomes also ranks high, with 51% selecting it among their first, second, and third factors.

## Geographic Results of Respondents



## Site Preference

27% of respondents to this question selected Vancouver as their preferred city to attend future continuing education events, with 13% selecting Victoria. 7.5% selected both Whistler and the Okanagan, and 7% selected Toronto. All other cities listed in the example received 5% of responses or less.

11% would prefer continuing education events in other locations – from the specified answers, there is preference to attend continuing education events within smaller communities in BC. For example:

- Nanaimo
- Areas in the BC's Northern Interior (Williams Lake, 100 Mile House, Kamloops, Prince George).
- Areas within Greater Vancouver, such as Surrey or Abbotsford, Richmond.



## Prize Winners

Congratulations to the winners listed below! We have contacted you in regards to how to claim your prize.

iPad Pro:

1. Craig Love

Complimentary registration for an IPCE main conference (maximum of three days) of your choice for January 2017 – May 2018:

1. Sherry Dale
2. Glenda Langford

\$25 Visa Card

1. Jackie Jack
2. Keith Robine
3. Jane Janzen

UBC Promotional Items:

1. Karon Foster
2. Jennifer Hancock
3. Richard Willier
4. Randa Nadjiwon-Cancade
5. Daphne Stevens

**Want to learn more about IPCE?**

**Please check out our website**

**[www.interprofessional.ubc.ca](http://www.interprofessional.ubc.ca)**