

The Collaborative Initiative on FASD: New Findings on Screening

Ed Riley, PhD

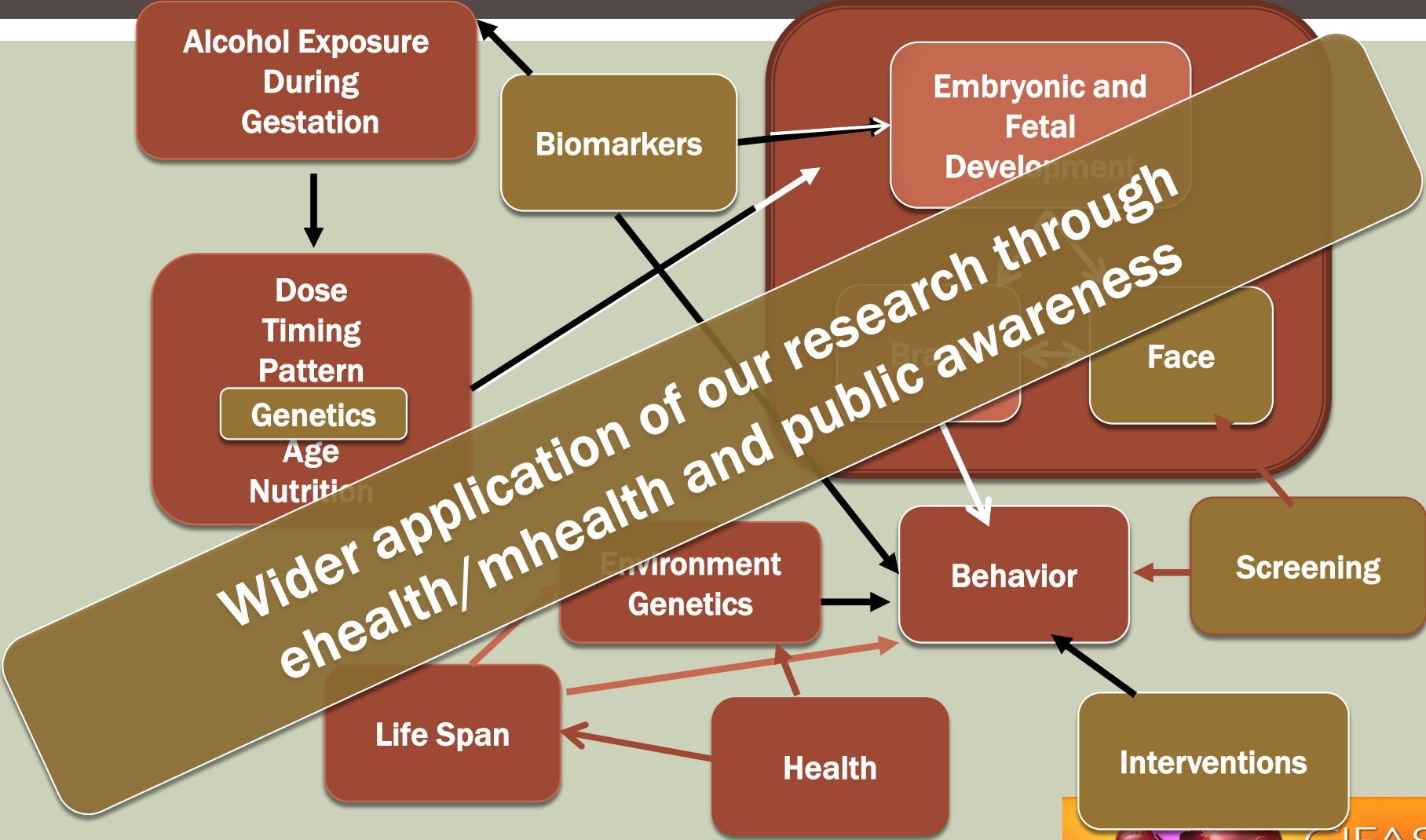
Distinguished Research Professor
Center for Behavioral Teratology
San Diego State University
San Diego, CA, USA

I have no conflict of
interest to report
and no financial
relationship with
any commercial
interest

COLLABORATIVE INITIATIVE ON FASD

- An international, multidisciplinary collaboration of both basic and clinical research projects
- Established in 2003 with funding from NIAAA to enhance the definitive diagnoses of FASD at different stages of the lifespan based on biological, physical, and/or behavioral assessment and to improve outcomes in individuals with FASD.

CIFASD CONCEPTUAL FRAMEWORK



MANY THANK TO THE NIAAA AND THE FOLKS THERE

B. Dunty



G. Koob



D. Hereld

PART 1 - THE GENETICS OF FASD: CIFASD STUDIES IN FISH, MICE, AND HUMANS

- Genetic and Bioinformatic Approaches to Understanding Alcohol Teratogenesis
 - Johann Eberhart, PhD, Associate Professor, Molecular Biosciences, University of Texas at Austin, Austin, TX, USA
- Diving into Social Deficits with a Zebrafish Model
 - Yohaán Fernandes, PhD, Molecular Biosciences, University of Texas at Austin, Austin, TX, USA
- Genetic Modifiers of Susceptibility to PAE in Mice
 - Scott Parnell, PhD, Assistant Professor, Bowles Centre for Alcohol Studies, Department of Cell Biology and Physiology, University of North Carolina, Chapel Hill, NC, USA
- The Genetics of FASD: Accelerating Research Advances
 - Tatiana Foroud, PhD, Professor, Department of Medical and Molecular Genetics, School of Medicine, Indiana University, Indianapolis, IN, USA

PART 2 - BIOMARKERS OF EXPOSURE AND RISK: THE QUEST FOR EARLY DIAGNOSIS AND INTERVENTION

- **Maternal Circulating MicroRNAs Control The Placental Response To PAE**
 - Rajesh C. Miranda, PhD, Professor, Department of Neuroscience and Experimental Therapeutics, College of Medicine, Texas A&M University Health Science Center, Bryan, TX, USA
- **Immune Dysregulation in FASD: Programming of Health and Neurobehavioral Outcomes**
 - Joanne Weinberg, PhD, Professor and Distinguished University Scholar, Emerita, Department of Cellular & Physiological Sciences, University of British Columbia, Vancouver, BC, Canada
- **A Growth Modeling Approach to Predicting Future Neurodevelopmental Performance in Preschool Children with PAE**
 - Christina Chambers, PhD, MPH, Professor, Department of Pediatrics and Family Medicine and Public Health, School of Medicine; Co-Director, Center for Better Beginnings; University of California San Diego, La Jolla, CA, USA

PART -3 -AUTOMATING THE DIAGNOSIS AND TREATMENT OF FAS

- **Development and Implementation of a Mobile Screening Tool for Identification of Children Affected by Prenatal Alcohol**
 - Sarah Mattson, PhD, Professor, Department of Psychology, San Diego State University, San Diego, CA, USA
- **3D Facial Analysis for the Objective Identification of FASD Associated Facial Dysmorphology**
 - Michael Suttie, PhD, Researcher, Medical Image Analysis, Nuffield Department of Women's Reproductive Health, University of Oxford, Oxford, UK
- **Families Moving Forward – Connect: Developing a Mobile Health Intervention for Families Raising Children with FASD**
 - Christie Petrenko, PhD, Clinical Psychologist and Researcher, Mt. Hope Family Center, University of Rochester, Rochester, NY, USA
 - Cristiano Tapparello, PhD, Research Associate, Department of Electrical and Computer Engineering, University of Rochester, Rochester, NY

THANK YOU

Ed Riley

eriley@sdsu.edu